

(19) World Intellectual Property Organization
International Bureau



(43) International Publication Date
5 April 2001 (05.04.2001)

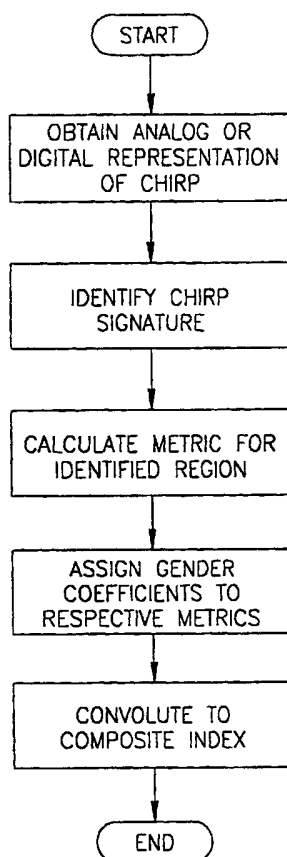
PCT

(10) International Publication Number
WO 01/22809 A1

- (51) International Patent Classification⁷: **A01K 45/00**
- (21) International Application Number: PCT/IL00/00593
- (22) International Filing Date:
26 September 2000 (26.09.2000)
- (25) Filing Language: English
- (26) Publication Language: English
- (30) Priority Data:
132092 27 September 1999 (27.09.1999) IL
- (71) Applicant (for all designated States except US): **GENDEX LTD.** [IL/IL]; Hatkufa 20, 92628 Jerusalem (IL).
- (72) Inventors; and
- (75) Inventors/Applicants (for US only): **FRIEDMAN,** Yaakov [IL/IL]; Uziel St. 111, 96431 Jerusalem (IL). **SANDLER, Uziel** [IL/IL]; Neve Yaakov 508/24, 97350 Jerusalem (IL). **COEL, Craig** [IL/IL]; Rechov Ben Saruk 8/7, 92309 Jerusalem (IL).
- (74) Agent: **REINHOLD COHN AND PARTNERS;** P.O. Box 4060, 61040 Tel Aviv (IL).
- (81) Designated States (*national*): AE, AG, AL, AM, AT, AU, AZ, BA, BB, BG, BR, BY, BZ, CA, CH, CN, CR, CU, CZ, DE, DK, DM, DZ, EE, ES, FI, GB, GD, GE, GH, GM, HR, HU, ID, IL, IN, IS, JP, KE, KG, KP, KR, KZ, LC, LK, LR, LS, LT, LU, LV, MA, MD, MG, MK, MN, MW, MX, MZ, NO, NZ, PL, PT, RO, RU, SD, SE, SG, SI, SK, SL, TJ, TM, TR, TT, TZ, UA, UG, US, UZ, VN, YU, ZA, ZW.
- (84) Designated States (*regional*): ARIPO patent (GH, GM, KE, LS, MW, MZ, SD, SL, SZ, TZ, UG, ZW), Eurasian patent (AM, AZ, BY, KG, KZ, MD, RU, TJ, TM), European

[Continued on next page]

(54) Title: A METHOD FOR DETERMINING GENDER OF A HATCHLING



(57) Abstract: A method, system and computer program product for determining gender of a hatchling in a genetically similar group of hatchlings, by identifying a chirp signature region in a chirp and calculating a plurality of metrics for the chirp signature region, wherein at least one of the metrics is an integral or a derivative of the chirp signature region or of a portion thereof. A gender coefficient is assigned according to each of the calculated metrics, and the gender coefficients are convoluted into a composite gender confidence index. This also allows hatchlings having enhanced gender-related chirps to be bred by determining the respective gender of a plurality of hatchlings and breeding those hatchlings for which the respective composite gender confidence index is most indicative of either female or male.

WO 01/22809 A1